



FERRY ELEMENTARY SCHOOL

October Newsletter



PRINCIPAL MESSAGE

Dear Parents,



October has been an event filled month!

Conferences were well attended. The Book Fair, Fun Run and Glow Dance were all very successful! We have one more event happening before the month ends - - - Halloween parade and parties. The details for October 31st are as follows:

- 9:00 Parade
- 9:30 All School Assembly
- 10:30 Classroom parties
- 11:36 Students dismissed (**October 31st is a half day**).

Students wear costumes to school. Students are not to wear full masks or masks that can obstruct their vision. Also, props that resemble weapons or can be used as a weapon are not allowed.

Our parade will begin at 9:00. 5th grade will lead the parade with 4th grade following. We will proceed down the back stairwell and pick up 3rd grade and magnet classrooms. We will exit the building out the bike rack doors and pick up 1st and second at the outside classroom doors along the sidewalk. We will then pick up Mrs. Walkley, Mrs. Lane, and Mrs. Moskwa's classroom then proceed across the blacktop to pick up kindergarten. The parade will proceed down Roslyn to Wedgewood, cross the street and parade down the other side of Roslyn to Morningside. We will cross at Morningside and enter the building through the bike rack doors. Students will proceed directly to the gym for the assembly.

The students, staff, and I look forward to your waves and smiles as we parade along Roslyn!

Gloria Hinz

NOVEMBER 2018



November 1, 19 & 29	Choir Rehearsal - Full Choir
November 1, 8, 15 & 29	TGA Golf
November 1 & 15	Boy Scouts Pack 34
November 2	Spiritwear Orders Due
	SuperBoy/SuperWoman (Mother/Son) Dodgeball Night
November 6	Election Day- No School for Students
	Staff Professional Development
	Ashby's Ice Cream PTO Fundraiser
November 7, 14 & 28	Girl Scout Troop 71293
November 8	Parents for Unity in Diversity
November 9	Ferry Picture Re-Take
November 13	Staff Meeting
November 13 & 27	Mini Picassos Art Room
November 13 & 27	First Serve Tennis
	Boy Scouts
November 14	PTO Meeting
	1st Grade to Parade Company
November 15	S3 Meeting
November 16	Tornado Drill
	Viviano Flower Shop PTO Fundraiser
November 19	Choir Rehearsal - Full Choir
November 20	ES 1/2 Day AM - Records Day PM
	Nest Activity
	Licavoli's Market PTO Fundraiser
November 21 - 23	No School. Thanksgiving Break
November 27	K-2, 3-5 Vertical Meeting
	Student Lighthouse Team Meeting
November 28	Special Education Consult Meetings
	Lockdown Drill
November 29	Choir Rehearsal - Full Choir
November 30	Townhall
	Santa Dinner



November 2018

Parking Lot Reminders

Parking lot drop off and pick up:

Children should be dropped off curbside from the drop off line. Please do not park and walk your child through the parking lot. This increases the risk of student injury. We also ask that you do not drop children off near the bike racks. This area is intended for buses and our handicap students. When cars are blocking this area the buses get backed up which negatively impacts the drop off lane.

Thank you for your cooperation.

BOX TOPS NEWS



Mrs. Lucido and Mrs. Hard's class earned first place for September's box tops collection. The box tops trophy is proudly displayed in their classroom. Ferry families earned **\$115.80** for Ferry School during September. The next collection will be at the end of October.



Reporting Absences

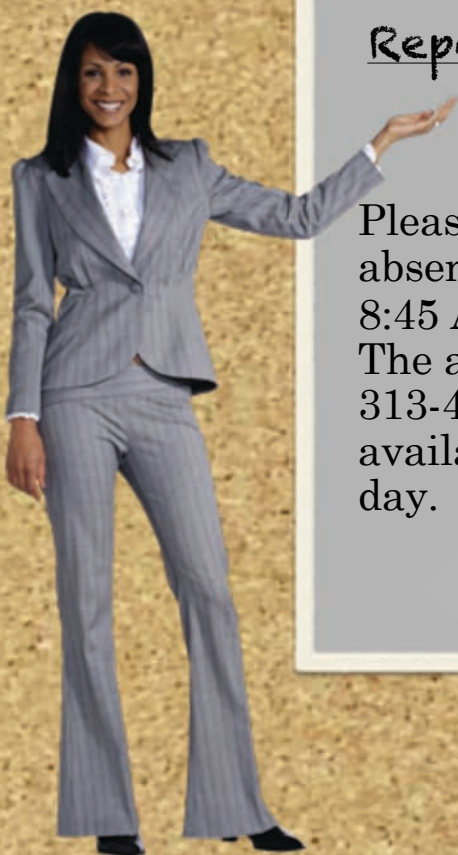
Please report all student absences to the office by 8:45 AM.

The attendance line, 313-432-4101, is available 24 hours a day.



Detroit Dog Rescue needs your empty paper towel/toilet paper tubes and newspapers! We use those empty tubes and newspaper to wrap treats for the shelter dogs to open - keeps them engaged, enriched and allows them a bit of fun during their stay at DDR. There is a large box in the front hallway near the big Leader in Me sign for your contributions.

Thank you for your support!



Elementary Bell Schedule for 2018-19

PLC Monday

9:05 a.m.	Entry Bell
9:10 a.m.	AM Instruction Begins
11:56 a.m.	Lunch Bell
12:44 p.m.	Lunch Dismissal Bell
12:46 p.m.	PM Instruction Begins
3:38 p.m.	Dismissal Bell

Tuesday – Friday

8:20 a.m.	Entry Bell
8:25 a.m.	AM Instruction Begins
11:36 a.m.	Lunch Bell
12:24 p.m.	Lunch Dismissal Bell
12:26 p.m.	PM Instruction Begins
3:38 p.m.	Dismissal Bell

PLC Mondays

September	10, 17, 24
October	1,8,15,22,29
November	5,12,19,26
December	3,10,17
January	7,14,21,28
February	4,11,25
March	4,11,18,25
April	1,8,15,22,29
May	6,13,20
June	3,10

Service Safety Hours

Mondays

8:50 – 9:05 am (tardy @ 9:10 am) Mornings

3:35 – 3:50 p. (leave class at 3:30 pm)
Dismissal

Tuesday – Friday

8:10–8:20 am (tardy @ 8:25 am) Mornings

3:35 – 3:50 pm (leave class @ 3:30 pm)
Dismissal

Morning Announcements

Monday 9:15 am

Tuesday – Friday 8:30 am

AM ½ Day Bell Schedule

8:20 am	Entry Bell
8:25 am	AM Instruction Begins
11:36 am	Dismissal Bell



The Leader in Me®

LIGHTHOUSE TEAM

"Leadership is communicating to people their worth and potential so clearly that they come to see it in themselves."

Stephen R. Covey



The Student Lighthouse Team would like to thank everyone for supporting our Smencil Sale – it was a huge success! The money raised from this sale will pay for the popsicles from the Peace Pole

ceremony, the appreciation pens given to those who help make Ferry amazing and additional things needed to support projects throughout the school year. If we sold out before you could buy, don't worry – Student Lighthouse will be selling Smencils again in February! Be sure to save your money!!!

The Student Lighthouse Team would also like to thank everyone for participating in the Michigan vs. Michigan State spirit day. Yay, Team Ferry!!!

The Leader in Me®

FAMILY NEWSLETTER

By Dr. John and Jane Covey



October Newsletter

Organizational Skills

Imagine a school morning where everyone knows what to do and is ready on time. Sound too good to be true? Well, it's possible! Organization is a skill learned over time. By teaching organization at home, your child will learn this very important skill.

Use the first three habits as a learning tool for you and your child:

Habit 1: Be Proactive

Habit 1 is about initiative and responsibility. Help your child determine what he or she will need for the next day. To start, writing a list may be helpful. Next, have your child gather the non-perishable items and put them in his or her school bag.

Habit 2: Begin With the End in Mind

Habit 2 is about visualizing how you would like something to turn out before it happens. If a smooth morning is the goal, brainstorm with your child how that will look and feel like. Your child may actually have time to do something extra in the morning if he or she is organized and you will all have a happy start to the day.

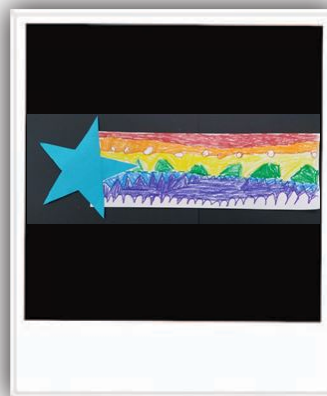
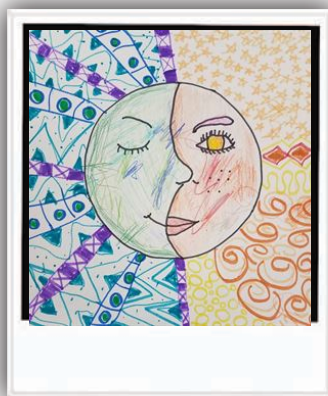
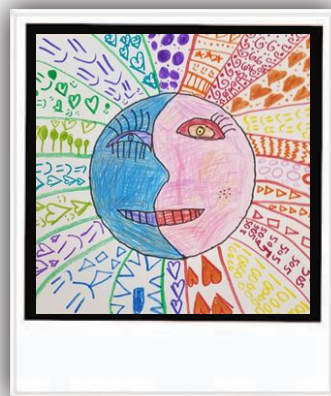
Habit 3: Put First Things

Habit 3 means focusing on the task when there's something else you would rather be doing – the hardest part of all! Help your child learn how to avoid distractions by reminding him or her that, if they stick to it, all the fun things can come right after—with no guilt or nagging!

Once children know these habits, and how to apply them, they can start tackling more difficult tasks independently. They will begin to feel self-confident and proud when they're able to complete homework, chores, and other tasks by themselves. They're also sure to be pleased when they find they have some extra free time to do what they'd like to do. Remember, it may take time to teach your child these skills. Sometimes, it will seem simpler just to do it for them. But remember, your child won't learn how to be independent and successful if you always do it for them. Using Habits 1-3 is a life skill that will benefit them their entire lives.

THE ART ROOM

artsonia
just beyond imagination



Visit the complete artworks at:

<https://www.artsonia.com/schools/school.asp?id=37394>



Halloween at Hogwarts

Young People's Concert
Orchestra Hall

Saturday, October 27, 2018
11:00 a.m.

All aboard the Hogwarts Express! Join the DSO for selections from your favorite Harry Potter films and more. Witches, wizards and even muggles are invited to participate in the annual costume contest and other spooktacular pre-concert activities!



The Snowman

Young People's Concert
Orchestra Hall

Saturday, December 8th
11:00 a.m.

Based on the award-winning children's book by Raymond Briggs, *The Snowman* comes to life on the big screen! The DSO performs Howard Blake's memorable soundtrack while the animated classic plays above the orchestra. Come inside from the cold to enjoy this and other musical winter favorites!

Some exciting concerts presented by the Detroit Symphony Orchestra are coming up this year that your children are sure to enjoy!

The concerts are designed with young people in mind and are usually about an hour long and feature high-interest music. (see below) Tickets sell out quickly, so you are encouraged to act quickly if you wish to take advantage of this opportunity.

Please follow this link for more information: [DSO Young People's Family Concerts](#)



Young People's Concert

Orchestra Hall

Saturday, March 23rd
11:00 a.m.

An irritable grouchy old man moves in to the apartment above Christoph and his family in Vienna. Christoph is not pleased by **Beethoven's** arrival, but he begins to understand his genius and the beauty of his music. See the full story unfold in this interactive theatrical concert.



Young People's Concert

Orchestra Hall

Saturday, May 4th
11:00 a.m.

Travel to a galaxy far, far away with the DSO! This family-friendly program highlights the music behind favorite characters from the beloved Star Wars film series.

Ferry Winter Concert



"In This House A Winter Celebration

Presented by the students in the following classes:
Gill, Schrade, Ellis, Sattelmeier, Walsh, Aldrich, McKelvey,
Fisher

Monday, December 17, 2018
7:00p.m.

North High School Performing Arts Center

Students are to report to assigned classrooms at North at 6:45p.m.
Performers are encouraged to wear "Dressy Best." When choosing your ensemble, please keep in mind that the stage can get quite warm!
Ladies, please wear flat shoes or low heels if possible as you will be climbing up and down the risers.
Safety and comfort first for our young performers!



Our mission is to celebrate and grow our love of nature and inspire others to do the same.



This year Mrs. Lassiter has 2 Nature Clubs that meet at lunch.

THE NATURE LOVERS (only 2nd graders from her class) will meet at lunch in room 120 on the following dates:

Oct. 3	Jan. 9	Apr. 10
Oct. 17	Jan. 23	Apr. 24
Nov. 7	Feb. 6	May 8
Nov. 28	Mar. 6	May 22
Dec. 12	Mar. 20	June 5

THE WILDLIFE CLUB (2nd, 3rd, 4th, and 5th graders from other classes) will meet at lunch in room 120 on the following dates:

Oct. 10	Jan. 16	Apr. 17
Oct. 24	Jan. 30	May 1
Nov. 14	Feb. 27	May 15
Dec. 5	Mar. 13	May 29
Dec. 19	Mar. 27	June 5

So far this year we have had a scavenger hunt in Ferry's Nature Center and made painted leaf prints using leaves from the Ferry Forest. Upcoming projects include making bird feeders, planting flowering bulbs, and making animal and bird posters.



Michigan Anti-Cruelty Society

MAKE IT A BE KIND TO ANIMALS WORLD



**Help the Shelter Animals!
Dogs, cats, and rabbits!**



at the Michigan Anti-Cruelty Society (MACS)

*Start saving these items for our animal shelter collection
coming soon to Ferry!*

**Comforters, quilts, blankets, sheets, pillowcases
Towels, washcloths, paper towels, rubber-back rugs
Ziploc or Gladware containers, stainless steel bowls,
Dog and cat beds, toys, treats, rawhide chews, big chew toys
Dog collars, paper plates and bowls**

Sponsored by Mrs. Ellis



Box Tops Poster Contest

Welcome back to school! It is time start collecting box tops again. In an effort to get the word out, we are asking you to make a poster. Please help us spread the word that box tops earn money for Ferry. All you have to do is clip them and bring them in! Each month the class with the most box tops will be recognized. There will be a special prize at the end of the year for the winning class! Here are the details of the contest:

- 1. Your poster is due by September 28th**
- 2. You can turn your poster in to your teacher**
- 3. A winner will be announced the week of October 1st**
- 4. The winner of the contest will receive a
\$25 AMAZON GIFT CARD!**

So be creative and make sure to tell everyone how valuable those little box tops can be to our school!



**GROSSE POINTE PUBLIC
SCHOOL SYSTEM**

Kids Club Program

**Before and
After School
Care**

The Grosse Pointe Public School System recognizes the need for school-based child care in our community. Officially titled "School-Age Child Care Program" (but is informally known as Kids Club), is a self-supporting program aimed at providing a supervised and safe environment for children before and after school. Kids Club offers planned, interesting activities that are developmentally appropriate and enhance physical, intellectual, social and emotional growth. Children benefit from the opportunity to be with friends in a supervised program that offers parents a safe, practical solution for childcare needs before and after school.

Kids Club is offered on most 1/2 days during teacher workshop and conference days.

visit:

www.gpschools.org or call

313-432-3009 for more information!

Kids club starts at 7:00 am Monday-Friday at your child's school. Our programs run after school until 6:30 pm.



CALLING ALL SUPERBOYS & THEIR REAL-LIFE SUPERWOMAN

PUT ON YOUR SUPERSUITS, CAPES, AND MASKS
COME READY FOR ACTION, ADVENTURE, AND FRIENDLY COMPETITION!



POW!

FUN NIGHT FOR FERRY ELEMENTARY'S
SUPERBOYS AND THEIR LEADING LADY
FRIDAY, NOV. 2 • 6:30-8:30 • FERRY GYM
REFRESHMENTS & SNACKS WILL BE PROVIDED

DODGEBALL!
WHAM!!

VOLUNTEERS AND DONATIONS NEEDED!
CONTACT **EMILY RUBIO:**
(586)246-9561

**\$5 PER
FAMILY**



GET FIRED UP FALCONS!

The PTO is excited to once again offer *Ferry Elementary Falcons* spiritwear! Available items include short and long-sleeve t-shirts, hooded sweatshirts, full-zip sweatshirts, as well as short-sleeve tech tees, quarter-zip tech pullovers and water bottles. New for this year, we are offering youth sweatpants and x-small sizing for our youth t-shirts and sweatshirts. To order spiritwear, please return the attached order form and cash or check payable to FERRY PTO in an envelope labeled "Ferry Elementary Spiritwear" to the Ferry PTO mailbox in the school office. **Orders are due by Friday, November 2nd.** Items will arrive mid-December, just in time for the holidays!

SIZE / DESIGN OVERVIEW:

- Youth apparel available in size X-Small through X-Large. See order form for restrictions.
- Men's and Women's apparel available in size Small through XX-Large.
(XX-Large is available for an additional fee. Please see attached order form for details.)
- Apparel features either a full-size front graphic or small left chest graphic.
- Apparel offered in Red or Gray. See attached order form for specific color information.
- Please see reverse side of this flyer for detailed size information.
- Personalization is available on the back of all t-shirts and sweatshirts for an additional \$6.00. It is not offered on tech apparel.



GIVING A GIFT? Typically, spiritwear will be sent home with your child. If your order includes a gift for your child(ren), however, we'll help keep it a secret! On the order form, simply check the box for "My order includes a gift. I will pick-up at an off-site location." Details about order pick-up will be released when spiritwear arrives.

QUESTIONS? Contact ferrypto@gmail.com if you have questions.



SPIRITWEAR ORDERS ARE DUE BY FRIDAY, NOVEMBER 2ND.
Items will arrive mid-December. Just in time for the holidays!

FERRY ELEMENTARY SPIRITWEAR SPECS

YOUTH Short-Sleeve T-Shirt

(Full Size Graphic or Left Chest Graphic)

Gildan 5000B	XS <small>(2/4)</small>	S <small>(6/8)</small>	M <small>(10/12)</small>	L <small>(14/16)</small>	XL <small>(18/20)</small>
Body Length	20-1/2	22	23-1/2	25	26-1/2
Body Width	16	17	18	19	20

YOUTH Long-Sleeve T-Shirt

(Full Size Graphic or Left Chest Graphic)

Gildan 5400B	XS <small>(2/4)</small>	S <small>(6/8)</small>	M <small>(10/12)</small>	L <small>(14/16)</small>	XL <small>(18/20)</small>
Body Length	20-1/2	22	23-1/2	25	26-1/2
Body Width	16	17	18	19	20

YOUTH Hooded Sweatshirt (Full Size Graphic only)

Gildan 18500B	XS <small>(2/4)</small>	S <small>(6/8)</small>	M <small>(10/12)</small>	L <small>(14/16)</small>	XL <small>(18/20)</small>
Body Length	19-3/4	21-1/4	22-1/2	24	25-1/2
Body Width	16	17	18	19	20

YOUTH Zip-Up Hoodie (Left Chest Graphic only)

Gildan 18600B	XS <small>(2/4)</small>	S <small>(6/8)</small>	M <small>(10/12)</small>	L <small>(14/16)</small>	XL <small>(18/20)</small>
Body Length	20-1/4	21-3/4	23	24-1/2	26
Body Width	15-1/4	16-1/4	17-1/4	18-1/4	19-1/4

YOUTH Sweatpants (Full Size Graphic only)

Gildan 18200B	XS <small>(2/4)</small>	S <small>(6/8)</small>	M <small>(10/12)</small>	L <small>(14/16)</small>	XL <small>(18/20)</small>
Waistband	NA	10-1/2	11	12	13
Inseam	NA	19	22	25	28

YOUTH 1/4 Zip “Tech” Pullover (Left Chest Graphic only)

Badger 2102	XS <small>(2/4)</small>	S	M	L	XL
Body Length	NA	23	25	26	27
Body Width	NA	16	17	18	19

YOUTH Short-Sleeve “Tech” Shirt (Left Chest Graphic only)

Badger 2120	XS <small>(2/4)</small>	S	M	L	XL
Body Length	NA	23	25	26	27
Body Width	NA	16	17	18	19

MEN’S Short-Sleeve T-Shirt

(Full Size Graphic or Left Chest Graphic)

Gildan 5000	S	M	L	XL	XXL *
Body Length	28	29	30	31	32
Body Width	18	20	22	24	26

MEN’S Long-Sleeve T-Shirt

(Full Size Graphic or Left Chest Graphic)

Gildan 5400	S	M	L	XL	XXL *
Body Length	28	29	30	31	32
Body Width	18	20	22	24	26

MEN’S Hooded Sweatshirt (Full Size Graphic only)

Gildan 18500	S	M	L	XL	XXL *
Body Length	27	28	29	30	31
Body Width	20	22	24	26	28

MEN’S Zip-Up Hoodie (Left Chest Graphic only)

Gildan 18600	S	M	L	XL	XXL *
Body Length	27	28	29	30	31
Body Width	19-1/4	21-1/4	23-1/4	25-1/4	27-1/4

MEN’S 1/4 Zip “Tech” Pullover (Left Chest Graphic only)

Badger 4102	S	M	L	XL	XXL *
Body Length	27	28	29	30	31
Body Width	19	21	23	25	27

LADIES 1/4 Zip “Tech” Pullover (Left Chest Graphic only)

Badger 4103	S	M	L	XL	XXL *
Body Length	27	28	29	30	31
Body Width	17-1/2	19	21	23	25
Bust	32-34	34-37	37-41	41-44	44-47

MEN’S Short-Sleeve “Tech” Shirt (Left Chest Graphic only)

Badger 4120	S	M	L	XL	XXL *
Body Length	29	30	31	32	33
Body Width	19	21	23	25	27

LADIES Short-Sleeve V-Neck “Tech” Shirt (Left Chest Graphic only)

Badger 4162	S	M	L	XL	XXL *
Body Length	26	27	28	29	30
Body Width	17-1/2	19	21	23	25
Bust	32-34	34-37	37-41	41-44	44-47

*Adult XX-Large available for an additional cost. Please see order form.

FERRY ELEMENTARY SPIRITWEAR [DUE BY FRIDAY, NOVEMBER 2ND]

Name(s): _____ Phone Number: _____

Youngest Child's Teacher: _____ Email: _____

☐ My order includes a gift. I will pick-up at an off-site location (location and time to be provided later)

ORDER TOTAL: _____

Please return this order form and cash or check payable to FERRY PTO in an envelope labeled “Ferry Elementary Spiritwear.” Orders are due by Friday November 2nd and spiritwear will arrive by mid-December, just in time for the holidays!



LEFT CHEST EXAMPLE



#1



#2



#3



#4

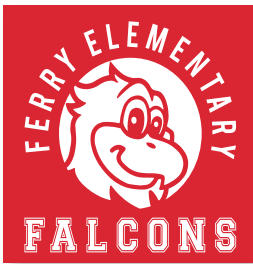


#5



#6

TECH SPIRITWEAR ITEMS (100% Polyester)	YOUTH				ADULT					PRICE	SUBTOTAL
	YS	YM	YL	YXL	AS	AM	AL	AXL	AXXL		
#1: Short-Sleeve Tech Shirt (Badger 2120/4120) [Graphite with Left Chest]										\$16.00 (Add \$2.50 for AXXL)	
#2: LADIES Short-Sleeve V-Neck Tech Shirt (Badger 4162) [Red with Left Chest]										\$16.00 (Add \$2.50 for AXXL)	
#3: YOUTH Quarter-Zip Tech Pullover (Badger 2102) [Black with Graphite Collar]										\$25.00	
#4: MENS Quarter-Zip Tech Pullover (Badger 4102) [Black with Graphite Collar]										\$30.00 (Add \$3.00 for AXXL)	
#5: LADIES Quarter-Zip Tech Pullover (Badger 4103) [Red with Graphite Collar] *thumbholes on cuffs										\$30.00 (Add \$3.00 for AXXL)	
#6: LADIES Quarter-Zip Tech Pullover (Badger 4103) [Black with Graphite Collar] *thumbholes on cuffs										\$30.00 (Add \$3.00 for AXXL)	



FULL GRAPHIC EXAMPLE



#7



#8

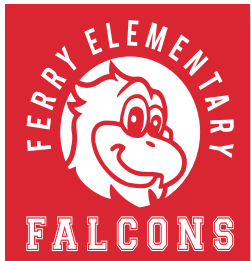
SPIRITWEAR ITEM	YOUTH (Gildan 5000B)					ADULT (Gildan 5000)					PRICE	PERSONALIZATION (Add \$6.00) [2" block font, upper case only, back side] Please print exact personalization clearly.	SUBTOTAL
	YXS	YS	YM	YL	YXL	AS	AM	AL	AXL	AXXL			
#7: Short-Sleeve Tee [Red with Full Graphic]											\$10.00 (Add \$2.00 for AXXL)		
#8: Short-Sleeve Tee [Charcoal with Full Graphic]											\$10.00 (Add \$2.00 for AXXL)		

PLEASE SEE BACK FOR ADDITIONAL SPIRITWEAR OPTIONS.



#9

SPIRITWEAR ITEM	QTY	PRICE	SUBTOTAL
#9: 28oz, push/pull cap, BPA free, dishwasher safe water bottle [Red with Black Top]		\$5.00	



FULL GRAPHIC EXAMPLE



#10



#11



#12



#13



LEFT CHEST EXAMPLE

SPIRITWEAR ITEM	YOUTH (Gildan 5400B)					ADULT (Gildan 5400)					PRICE	PERSONALIZATION (Add \$6.00) [2" block font, upper case only, back side] Please print exact personalization clearly.	SUBTOTAL
	YXS	YS	YM	YL	YXL	AS	AM	AL	AXL	AXXL			
#10: Long-Sleeve Tee [Red with Full Graphic]											\$13.00 (Add \$2.00 for AXXL)		
#11: Long-Sleeve Tee [Charcoal with Full Graphic]											\$13.00 (Add \$2.00 for AXXL)		
#12: Long-Sleeve Tee [Red with Left Chest]											\$13.00 (Add \$2.00 for AXXL)		
#13: Long-Sleeve Tee [Charcoal with Left Chest]											\$13.00 (Add \$2.00 for AXXL)		



FULL GRAPHIC EXAMPLE



#14



#15



#16



#17



LEFT CHEST EXAMPLE

SPIRITWEAR ITEM	YOUTH (Gildan 18500B/18600B)					ADULT (Gildan 18500/18600)					PRICE	PERSONALIZATION (Add \$6.00) [2" block font, upper case only, back side] Please print exact personalization clearly.	SUBTOTAL
	YXS	YS	YM	YL	YXL	AS	AM	AL	AXL	AXXL			
#14: Hooded Sweatshirt [Red with Full Graphic]											\$20.00 (Add \$3.00 for AXXL)		
#15: Hooded Sweatshirt [Charcoal with Full Graphic]											\$20.00 (Add \$3.00 for AXXL)		
#16: Sweatpants (Gildan 18200B) [Red with Full Graphic]											\$20.00	PERSONALIZATION NOT AVAILABLE	
#17: Zip-Up Sweatshirt [Red with Left Chest]											\$22.00		

TOTAL



Digital Picks

*From your Elementary Library
Media Specialists*

October 2018

Volume 7 Issue 2

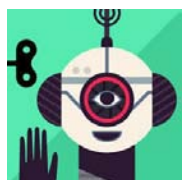
Selected by the elementary library media specialists for the families of Grosse Pointe Public Schools. Please enjoy this month's educational, informational, and entertaining websites and apps—"digital picks." We hope you find our reviews helpful, and welcome your suggestions.

<http://www.smithsonianeducation.org/students>



Smithsonian Education Students poses important art, science, and history questions and then gives kids the tools to explore them. If the solar system is the size of a fried egg, how big is our galaxy? Activities like Sizing up the Universe help kids make predictions about scale and checking them using math. How has the role of government during a national crisis changed since World War II? The Rationing During WWII activity lets kids use primary source materials to examine this and other big questions.

[The Robot Factory](#) - \$2.99 - iPhone, iPod Touch, iPad



Kids begin by naming and personalizing a profile for themselves, and then they can immediately design a robot. They choose from dozens of parts including a torso, a head, arms and legs, hands, and facial features. Using their device's microphone, kids also can record three sounds for the robot and can choose the robot's color scheme. Save the robot in the collection, and then take it out into the world to test how well the robot does on a variety of terrain.

[Thinkrolls](#) - \$3.99 - iPhone, iPod Touch, iPad



Thinkrolls: Kings & Queens has a story-based focus including kings and queens, dragons and castles. The scientific thinking required to solve the puzzles has a magical tone, with flying potions, ghosts and mirrors, and magical harps to put crocodiles to sleep. The challenges require thinking and planning ahead, but kids can try without penalty until they figure it out. The levels get progressively harder, and kids must complete all the chapters in one story before moving on to the next.

Elementary Library Media Specialists

Danielle Gostomski

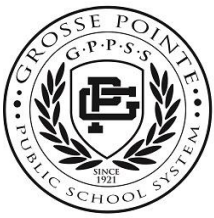
Amy Hermon

Sherry Martin

Cheryl Quinlan

Rachel Walpole





News from Grosse Pointe Public Schools

Schoology Update



Schoology is now available for staff and students in the district!

Schoology is the new Learning Management System (LMS) that will allow staff, students, and parents to be able to access instructional material, class announcements, grades (secondary only), and assignments throughout their courses.

You can access Schoology by going to:
gppss.schoology.com

Your account name and password is the same as your network username and password



Family Home Login Guide

Grosse Pointe Public School System uses Clever as a convenient way for students to access many of our learning applications in one place including Lexia. Clever also serves as a home to bookmark frequently used digital resources.



Step 1

a.) Access our district portal at <https://clever.com/in/gppss> from your preferred internet browser.

or

b.) Download and access Lexia Core 5 app and the Clever app available in the iTunes store. Once the app is downloaded, you will have to enter in your child's teacher's email address. Once complete, click on "log in with Clever".

Step 2

Login to Clever with one of these options:

Active Directory



Log in with Active Directory

Login:

Student identification number

Password:

Unique to student

Clever Badge

Obtain Clever Badge from classroom teacher.



Hold Clever Badge up to camera, lining it up with the square.

District Partnerships



GROSSE POINTE FOUNDATION
FOR PUBLIC EDUCATION
Enriching, Engaging, Inspiring our Future



Scholarship
through
Service



MISTAR
ParentPortal